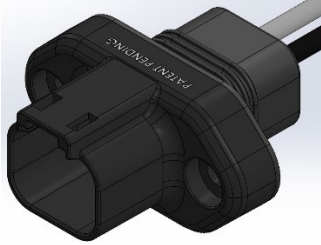
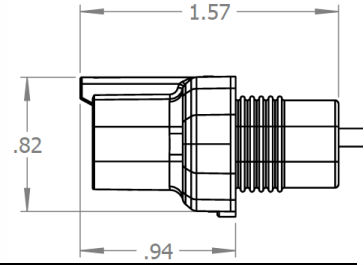


DT-MB Pro



DT-MB Pro 2 Positions

- Molded TPV
- Custom wire lengths and colors
- Black Anodized Aluminum Housing
- IP68 Rating
- 13A Contact Current Rating (MAX)

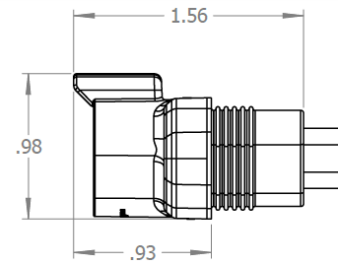


| Catalog Number | Conductor Size | Flexible Cord / AWM Types | UL Listed / Recognized |
|----------------|---|-----------------------------|------------------------|
| | | Description | |
| ACR-DT04-M2 | 2 x 20 AWG | 1007, 1015, 11028, GXL, TXL | T.B.D. |
| | 2 x 18 AWG | 1007, 1015, 11028, GXL, TXL | T.B.D. |
| | 2 x 16 AWG | 1007, 1015, 11028, GXL, TXL | T.B.D. |
| | 2 x 14 AWG | 1007, 1015, 11028, GXL, TXL | T.B.D. |
| NOTES | Equivalent to: DEUTSCH DT04-2P Amphenol AT04-2P Mates with: DEUTSCH DT06-2S Amphenol AT06-2S | | |



DT-MB Pro 3 Positions

- Molded TPV
- Custom wire lengths and colors
- Black Anodized Aluminum Housing
- IP68 Rating
- 13A Contact Current Rating (MAX)



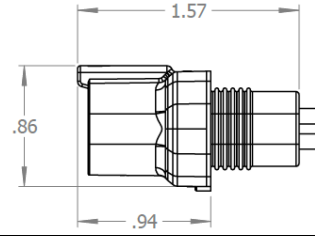
| Catalog Number | Conductor Size | Flexible Cord / AWM Types | UL Listed / Recognized |
|----------------|---|-----------------------------|------------------------|
| | | Description | |
| ACR-DT04-M3 | 3 x 20 AWG | 1007, 1015, 11028, GXL, TXL | T.B.D. |
| | 3 x 18 AWG | 1007, 1015, 11028, GXL, TXL | T.B.D. |
| | 3 x 16 AWG | 1007, 1015, 11028, GXL, TXL | T.B.D. |
| | 3 x 14 AWG | 1007, 1015, 11028, GXL, TXL | T.B.D. |
| NOTES | Equivalent to: DEUTSCH DT04-3P Amphenol AT04-3P Mates with: DEUTSCH DT06-3S Amphenol AT06-3S | | |

Preliminary Specifications. Subject to change. For additional information contact our R&D Department.



DT-MB Pro 4 Positions

- Molded TPV
- Custom wire lengths and colors
- Black Anodized Aluminum Housing
- IP68 Rating
- 13A Contact Current Rating (MAX)



| Catalog Number | Conductor Size | Flexible Cord / AWM Types | UL Listed / Recognized |
|----------------|--|-----------------------------|------------------------|
| | | Description | |
| ACR-DT04-M4 | 4 x 20 AWG | 1007, 1015, 11028, GXL, TXL | T.B.D. |
| | 4 x 18 AWG | 1007, 1015, 11028, GXL, TXL | T.B.D. |
| | 4 x 16 AWG | 1007, 1015, 11028, GXL, TXL | T.B.D. |
| | 4x 14 AWG | 1007, 1015, 11028, GXL, TXL | T.B.D. |
| NOTES | <p>Equivalent to: DEUTSCH DT04-4P Amphenol AT04-4P Mates with: DEUTSCH DT06-4S Amphenol AT06-4S</p> | | |

Preliminary Specifications. Subject to change. For additional information contact our R&D Department.